



PRISM

Philippine Rice Information System



First government rice monitoring system in Southeast Asia to generate information on planted rice area, yield, and rice areas at risk due to flood and drought at national level.

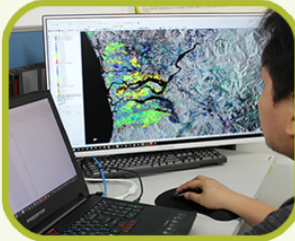
It applies the information and communications technology in rice agriculture by operating an online system to deliver near real-time information to its stakeholders.

It supports the Department of Agriculture in its strategic policy and decision-making, technology implementation, disaster preparedness, and emergency response.

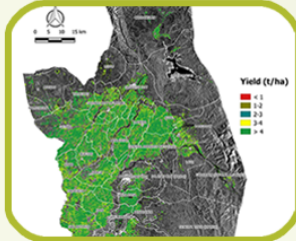


A satellite-based rice monitoring towards a rice-secure Philippines

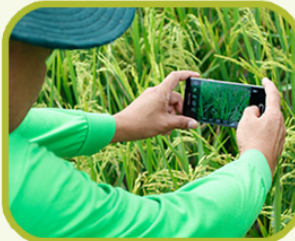
ACTIVITIES & SERVICES



Rice Area Mapping



Yield Estimation



Field Monitoring



Damage Assessment due to Flood and Drought



Capacity Building

- ### TECHNOLOGIES
- Remote sensing
 - Crop growth modeling
 - Smartphone-based survey forms
 - Geographic Information Systems
 - Information and Communication Technologies



PRiSM

DATA PRODUCTS

WEBSITE

<https://prism.philrice.gov.ph>

It provides an overview about PRiSM and access to interactive maps, information library, analytics, knowledge products, and other services.

INFOLIB

The InfoLib monitors and controls the sharing of all PRiSM products in a systematic way.

Make sure to create and log in your PRiSM account before accessing the data products.



Click **DATA PRODUCTS** menu at the upper right of the homepage.



Select the **YEAR AND SEMESTER, TYPE OF DATA**, and **COVERAGE** you want to access.



Click **DOWNLOAD**, then select the desired format. Agree with the **TERMS AND CONDITIONS ON HOW TO USE THE PRiSM PRODUCTS** and proceed.



DATA PRODUCTS

1. Rice area and planting dates maps
2. Rice area mid and end-season estimates
3. Yield mid and end-season estimates
4. Rice area at risk during flood or drought
5. Flooded or drought-damaged rice area maps and estimates



Click **NEW REQUEST**.



Fill out the **REQUEST FORM** and click **SUBMIT** once finished.

*Note: A **REQUEST LETTER** is required for a national coverage at municipal level multi-year data



NOTIFICATION and **UPDATES** will be sent to the requestor's email address until file is ready.



To download, make sure to verify the **USER PROFILE** and agree with the **TERMS AND CONDITIONS ON HOW TO USE THE PRiSM PRODUCTS**.



Enter the **DOWNLOAD KEY** sent to the requestor's email address and click **SUBMIT**.



Fill out the PRiSM Services Feedback Form (Accessing Data Products) then click **SEND RESPONSE**.



Review your request. Click **DOWNLOAD** if the product is correct or else click **CANCEL**.