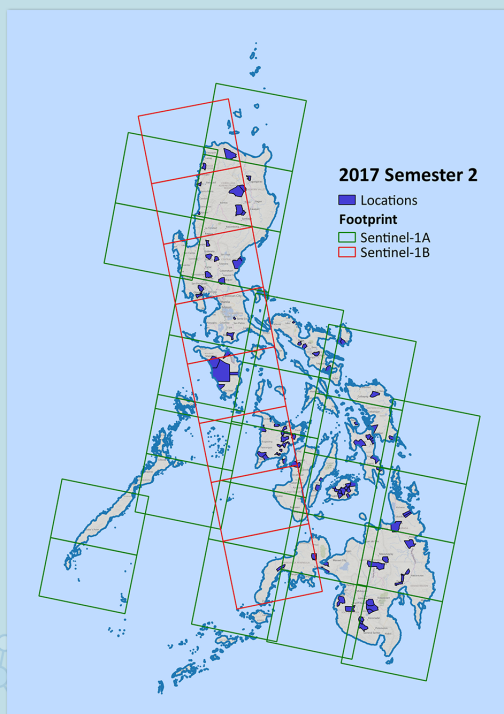


Project Locations & SAR Coverage



Developments on PRISM Operationalization

DA AO No. 9 - Establishment of the PRISM Unit based at PhilRice

DA SO No. 872 - Creation of a Technical Working Group for the ICT support in the operationalization of PRISM

Establishment and maintenance of local ICT infrastructure at PhilRice

Conduct of PRISM External Assessment

Established collaborations with the Department of Information and Communications Technology and the Department of Science and Technology - Advanced Science and Technology Institute

WHAT'S NEW WITH THE PRISM ANALYTICS?

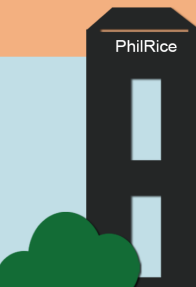
1. Established initial infrastructure for mirroring.
2. Established initial mirror setup of cloud in PhilRice.
3. Created a prototype script for program and database cloning scheduled every 30 minutes.
4. Optimization of the system based on the user feedback.
5. Created a prototype duplicate field data module.

Our Partners



www.riceinfo.ph
#WeArePRISM

- www.facebook.com/riceph
- [@RiceInfoPH](https://twitter.com/RiceInfoPH)
- <http://goo.gl/ZmtP0f>
- www.flickr.com/photos/philippinericeinfo



PRiSM
Philippine Rice
Information System

ACHIEVEMENTS
in the second semester of 2017



Mapping

664 SAR images acquired across the monitoring locations in the country.

Mapped **2,028,983 ha** of rice.

The overall accuracy was **88.7%** based on **1,971** validation points collected across the country.

Monitoring

Regional partners gather data using smartphones during field observations and crop health assessments.



FIELDS MONITORED

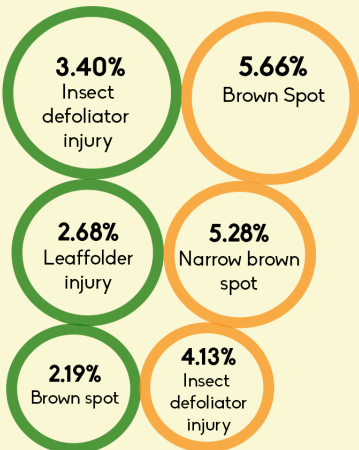
17 Regions
46 Provinces
92 Municipalities
1,370 Monitoring Fields

Crop Health Assessment

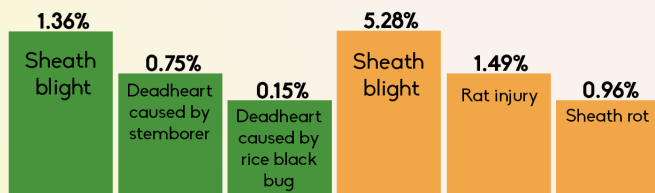
Top 3 pest injuries observed for:

Legend:
Green Booting Stage
Orange Dough Stage

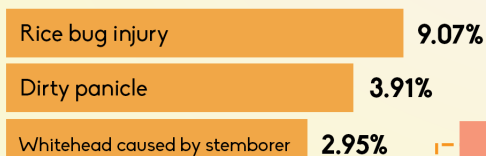
FOLIAR INJURIES



TILLER INJURIES



PANICLE INJURIES



1.49% average incidence of rats

Weeds

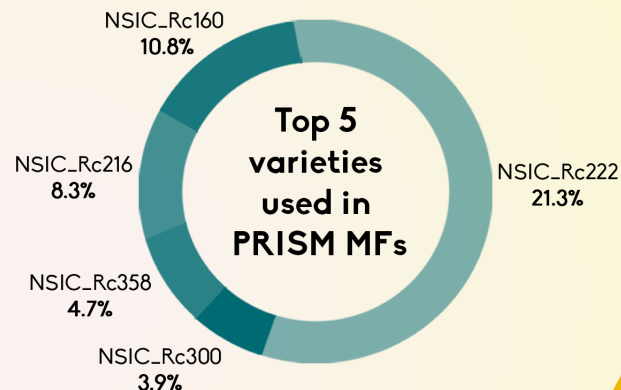
Major weeds in the PRISM MFs:

Echinochloa spp. - grass
Fimbristylis miliacea - sedges
Sphenoclea zeylanica - broadleaves

Estimating Yield

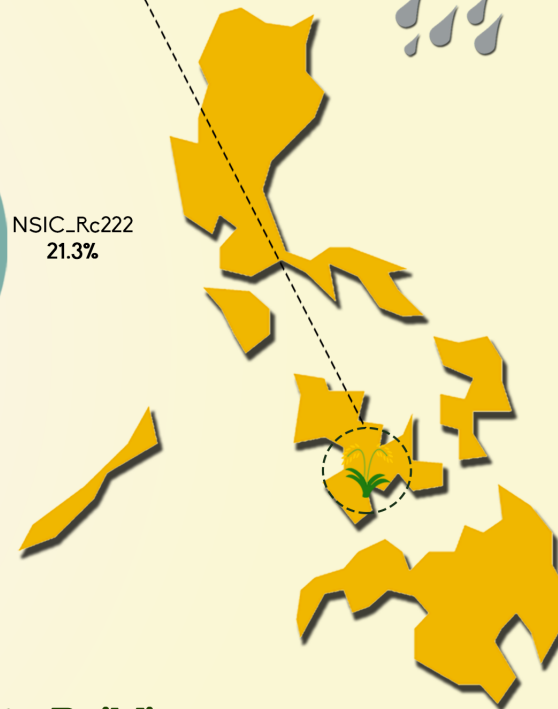
3.51 t/ha for the National Average Yield

Central Visayas as the highest-yielding region (4.05 t/ha)



Damage Assessment

3 Flood assessments delivered:
Typhoon Jolina (Pakhar)
Tropical Depression Maring
Tropical Storm Salome (Haikui)



Capacity Building



251 participants in
7 trainings and workshops held
from July to December 2017

Additional ICT support to
DA Regional Field Offices

280 Samsung A5
40 Rubber Boots

*Figures and values are based from PRISM Monitoring Fields (MFs) with validated crop health data (1,079 at booting and 931 at dough).